

"DISCOVER THE ENERGY"

imc

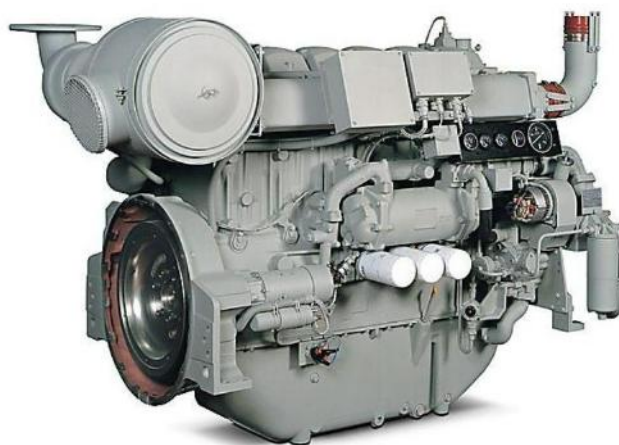
GENERATORS



www.imc.gen.tr

Perkins

P-898



DIESEL ENGINE

STANDBY kVA	898
STANDBY Kw	718,4
PRIME Kva	802
PRIME Kw	641,6
VOLTAGE REGULATION	400/231
POWER FACTOR	0,8
CANOPEID SIZE	2200x5920x2270
CANOPEID WEIGHT	7650
OPEN SKID SIZE	1700x4100x2270
OPEN SKID WEIGHT	6250

DIESEL MOTOR

BRAND	PERKINS
MODEL	4006-23TAG3A
ENGINE POWER STAND BY(kW)	786
ENGINE POWER PRIME(kW)	705
ENGINE SPEED (rpm)	1500
TIME	4
CYLINDER VOLUME (lt)	22,92
NO OF CYLINDERS AND BUILD	6 CYLINDERS - INLINE
BORE x STROKE (mm x mm)	160 x 190
COMPRESSION ROTE	13,6 : 1
GOVARNOR TYPE	ELECTRONIC
ASPIRATION	NATURALLY ASIPIROTED
INJECHON TYPE	DIRECT
COOLING METHOD	WATER COOLED - WITH RADIATOR

P-898

FUEL CONSUMPTION

%100 LOAD (Lt/hr)	172
%75 LOAD (Lt/hr)	130
%50 LOAD (Lt/hr)	90

ENGINE OIL CAPACITY (lt)	113
COOLING WATER CAPACITY (lt)	120
FUEL TANK CAPACITY (lt)	1500

ALTERNATOR

BRAND	IMC
TYPE	BRUSHLESS
SPEED	1500 RPM - 50 HZ
ISOLATION CLOSS	H
PROTECTION CLOSS	IP 23
VOLTAGE REGULATION	400/230
CONNECTION	STAR
WARNING	SELF WARNING
WINDING	2/3 WINDING

Continuous Power

The maximum power which a generating set is capable of delivering continuously whilst supplying a constant electrical load. Average load can be 100%. The generator must not be overloaded.

Standby Power

The max power available during a variable electrical power sequence, under the stated operating conditions, for which a generating set is capable of delivering in the event of a utility power outage or under test conditions for up to 200 hrs of operation per year under average of 70% load. Overloading isn't permissible.

Prime Power

The maximum power which a generating set is capable of delivering continuously whilst supplying a variable electrical load. Average load should be 70%. The generator can be overloaded 10% for 1 hour per 12 hrs.

50 Hz Diesel Generator Sets

Trans-Midi AMF

Automatic GenSet Controller with Transfer Switching

- Log last 50 events & alarm information with measured values
- Statistics records
- Mains & Generator phase sequence control
- Selectable Resistive sender types; Pt-100 VDO, US, GM, Ford, Datcon, etc...
- CanBus J1939 ECU communication
- SPN, FMI and OC values reading from engines via J1939
- Remote Start/Stop Speed and Idle mode Control via J1939
- Local Remote Control and Visualisation function



FEATURES

LCD Languages	English/Chinese, English/Deutch, English/Turkish, English/Espanol, English/Francais, English/Russian
Inputs	5x Configurable digital, 3x Analogue senders, Magnetic Pickup
Outputs	6x Configurable transistor, Mains and Generator Contactor Outputs
Current Measurement	3 phases CT inputs
Voltage Measurement	3 phase mains, 3 phase generator

CASE

Dimensions	158mm x 111mm x 67mm
Protection Class	NEMA 4X IP65 at front side

OPERATING RANGE

DC Battery Supply range	8 to 32Vdc, max.operating current is 370mA
Sender Measurement	0 ... 1300 ohm, Accuracy: 1%FS, resolution: 1 ohm
Cabin.Temp.Measuremet	
Operating / Storage Temp.	-20°C with +70°C / -40°C with +80°C

EXPANSIONS

Internal	
GPRS	
Embedded WEB server	
Serial ModBus	
Approvals	CE

· Technical information and values are according to ISO8528, ISO3046, NEMAMG-1.22, IEC600341, BS4999-5000, VDE0530 standards.

· Producing with ISO9001, ISO14001, OHSAS18001, TSE, CE standards.

· All information given in this leaflet is intended for general purposes only

· Due to apolicy continuous improvement IMC Generator reserves the right to amend detail s and specifications with out notice and all information given is subject to the IMC Generator's current condition of sales.

50 Hz Diesel Generator Sets

Trans-Midi AMF
Automatic GenSet Controller with Transfer Switching

- CanBus J1939 ECU communication
- Selectable second language
- Log last 50 events & alarm information with measured values
- Statistics records
- Mains and Generator phase sequence contro
- Selectable Resistive sender types; Pt-100, VDO, US, GM, Ford, Datcon, et
- Automatic transfer switching control and engine control
- SPN, FMI and OC values reading from engines via J1939



FEATURES

LCD Languages	English/Chinese, English/Deutch, English/Turkish, English/Italiano, English/Espanol, English/Francais, English/Russian
English / Ukrainian, English /Polish	5x Configurable digital, 3x Analogue senders, Magnetic Pickup
Inputs	6x Configurable digital, 4x Analogue senders, 1x Cabinet temperature, Magnetic Pickup, Charge Alternator D+(WL) inputs
Current Measurement	3 phases CT inputs for Load Current, 1x CT input for Earth Current
Voltage Measurement	3 phase mains, 3 phase generator

CASE

Dimensions	229mm x 152mm x 41mm
Protection Class	NEMA 4X IP65 at front side

OPERATING RANGE

DC Battery Supply range	8 to 32Vdc, max.operating current is 360mA
Sender Measurement	0 ... 1300 ohm, Accuracy: 1%FS, resolution: 1 ohm
Cabin.Temp.Measuremet	-50 ... +100 °C, Accuracy: 1 % FS, resolution: 1 °C.
Operating / Storage Temp.	-20°C with +70°C / -40°C with +80°C

EXPANSIONS

Internal	RS-485 Communication
GPRS	Trans-GPRS , Trans-Web_GPRS
Embedded WEB server	Trans-Web_Ethemet
Serial ModBus	Trans-Messenger.485 module with
Approvals	CE, GOST-R

Technical information and values are according to ISO8528, ISO3046, NEMAMG-122, IEC600341, BS4999-5000, VDE0530 standards.

- Producing with ISO9001, ISO14001, OHSAS18001, TSE,CE standards.
- All information given in this leaflet is intended for general purposes only.
- Due to apolicy continuous improvement IMC Generator reserves the right to amend detail s and specifications with out notice and all information given is subject to the IMC Generator's current condition of sales.

Standard Group Generator Features

- Easy operation and maintenance feature
- Automatic and Manual Operation System
- Aesthetic appearance and design
- Battery and connection cables in suitable amperage
- Motor jacket water heater
- Industrial type exhaust silencer system
- Oil drain valve and flexible fuel hoses
- Soundproof canopy (Optional)
- Vibration pads
- Various spare parts
- Service network with TSE certificate
- Test at full load for all functions for all types

Diesel engine
Alternator
Sound insulation cabinet
Transfer board
Chassis
Fuel tank
Water Cooled
1500 rpm
Insulation: H
DSE/DKG
Elektronik Coupler
3 Phases
231-400 V
50 Hz
IP:23 Class



Provides
Uninterruptible
Power



Easy and
Safe



High
Performance



Automatic
Circuit
Breaker



Oil Warning
System



Resistant



Economic

DIESEL ENGINE

- Heavy duty diesel engine
- 4 stroke - water cooled
- Dry type air filter
- 12V/24V Power system
- Engine rpm: 1500
- Tropical type radiator

MANUEL CONTROL PANEL

- Microprocessor electronic control panel
- Relays
- Protection fuses
- 3 pole output circuit breaker

CHASSIS

- Steel chassis
- Elastic vibration pads between engine and chassis
- Integrated fuel tank in the chassis
- Mechanical fuel gauge

ALTERNATOR

- Automatic voltage regulator (AVR)
- Overload : % 110 for one hour
: % 150 for 2 minutes
- Short circuit current resistance: % 300 10 seconds
- Isolation class H
- Protection class IP23
- 231 / 400 voltage
- Frequency 50 Hz

SOUND INSULATION CABINET

- Interior cabinet lighting
- Cabinet sound insulation with non-flammable material
- Thermally insulated exhaust system
DIN 4102,A2 standard
- Sound insulation with corrosion-resistant and moisture-repellent mineral
- Material Painted with electrostatic polyester powder coating after
- Chemical cleaning Transparent panel window for visibility of control panel

3

Faze

50

hz

1500

rpm

4

stroke

Water

Cooled

Diesel

Engine